

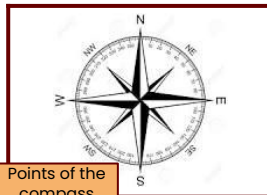


## Aspire Curriculum Knowledge Organiser

### What a Wonderful World

Year 5

Autumn



Points of the compass



Map of Japan



Map of New Zealand

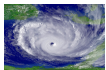
#### What? Key Knowledge Takeaways

A **volcano** is a landform (usually a mountain) where molten rock erupts through the surface of the planet.



An **earthquake** is a sudden violent shaking of the ground, typically causing great destruction, as a result of movements within the earth's crust or volcanic action.

A **hurricane** is a large rotating storm with high speed winds that forms over warm waters in tropical areas.



A **tsunami** is a series of waves caused by earthquakes or undersea volcanic eruptions.



#### Who and Where? Famous People or Places

<b>Ring of Fire</b>	The Ring of Fire is a major area in the basin of the Pacific Ocean where many earthquakes and volcanic eruptions occur.
<b>Charles Francis Richter</b>	Founded the Richter scale. This is a numerical scale that measures the magnitude (size) of an earthquake on a scale out of 10.
<b>Tropic of Cancer and the Tropic of Capricorn</b>	The Tropic of Cancer is the most northerly circle of latitude on Earth at which the sun can be directly overhead. The Tropic of Capricorn is the most southerly circle of latitude where the sun can be directly overhead.
<b>Arctic and Antarctic Circle</b>	The Arctic circle is an imaginary line drawn around the northern part of the world. The Antarctic circle is an imaginary line drawn around the southern part of the world.
<b>Japan</b>	Japan is located in the ring of fire therefore they suffer from many earthquakes, typhoons, tsunamis and volcanic eruptions.
<b>New Zealand</b>	New Zealand is located on top of two tectonic plates (Pacific and Australian plates) which causes them to have frequent earthquakes and volcanic eruptions.

#### Key Vocabulary

#### Definition

<b>Longitude</b>	Lines of longitude run from the top of the Earth to the bottom.
<b>Latitude</b>	Lines of latitude circle the Earth in an east-west direction.
<b>Hemispheres</b>	The equator is an imaginary line that runs through the middle of the Earth.
<b>Equator</b>	The equator splits the Earth into two parts; the Northern and Southern hemispheres.
<b>Natural disaster</b>	A natural disaster is a natural event such as a flood, earthquake, or hurricane that causes great damage or loss of life.
<b>Grid reference</b>	A grid reference is a map reference which indicates a location in terms of a series of vertical (up and down) and horizontal (left to right) grid lines identified by numbers.

